

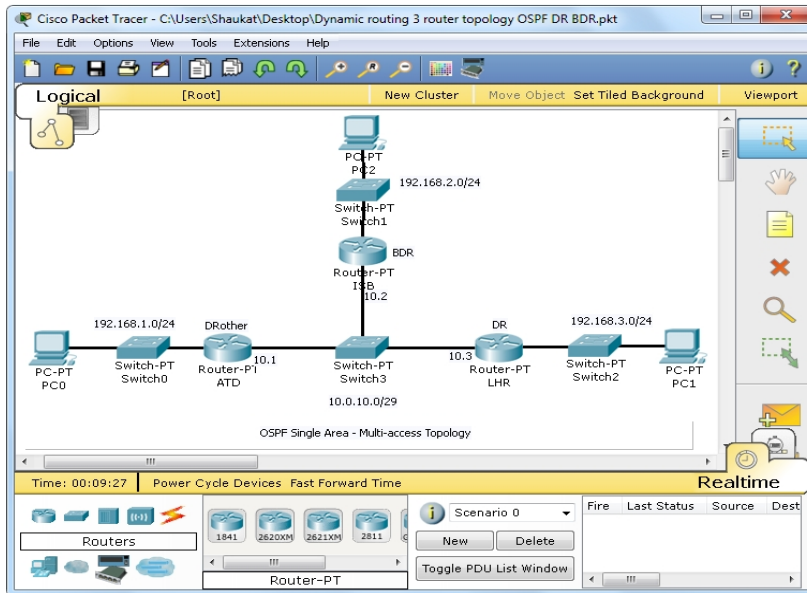
# Dynamic Routing - OSPF in 3 Routers Multi-access Topology in Packet Tracer 3.5

Written by Shaukat

Thursday, 13 December 2012 11:50 -

---

## Three router topology for lab practice in Packet Tracer 3.5



## OSPF Routing

### Router\_ATD:

```
router ospf 1  
network 192.168.1.0 0.0.0.255 area 0  
network 10.0.10.0 0.0.0.7 area 0  
passive-interface f0/0
```

## Dynamic Routing - OSPF in 3 Routers Multi-access Topology in Packet Tracer 3.5

Written by Shaukat

Thursday, 13 December 2012 11:50 -

---

### Router\_ISB:

```
router ospf 1
network 192.168.2.0 0.0.0.255 area 0
network 10.0.10.0 0.0.0.7 area 0
passive-interface f0/0
```

### Router\_LHR:

```
router ospf 1
network 192.168.3.0 0.0.0.255 area 0
network 10.0.10.0 0.0.0.7 area 0
passive-interface f0/0
```

### Please Note:

- Router\_LHR should be DR
- Router\_ISB should be BDR
- Router\_ATD should be DRother

## Dynamic Routing - OSPF in 3 Routers Multi-access Topology in Packet Tracer 3.5

Written by Shaukat  
Thursday, 13 December 2012 11:50 -

---

### Global Configuration Commands

hostname xxxxx

### Interface Configuration Commands

interface XYZ x/x

ip address x.x.x.x y.y.y.y

ip ospf hello-interval xx

ip ospf dead-interval xx

ip ospf priority xxx

bandwidth xxxxx (e.g., 10000 = 10Mbps)

no shutdown

## Dynamic Routing - OSPF in 3 Routers Multi-access Topology in Packet Tracer 3.5

Written by Shaukat  
Thursday, 13 December 2012 11:50 -

---

exit

### OSPF Configuration Commands

router ospf xxx

router-id x.x.x.x (router-id for this OSPF process)

network x.x.x.x y.y.y.y area 0 (Enable routing on an IP network)

passive-interface XYZ x/x (Suppress routing updates on an interface)

default-information originate (Control distribution of default information)

distance xxx (Define an administrative distance)

redistribute static (Redistribute information from another routing protocol)

exit (Exit from routing protocol configuration mode)

### OSPF Verification Commands:

show ip route (IP routing table)

show ip protocols (IP routing protocol process parameters and statistics)

show ip ospf (OSPF information)

show ip ospf neighbor (Neighbor list)

show ip ospf interface (Interface information)

show ip ospf database (Database summary)

*Your comments are welcome...*